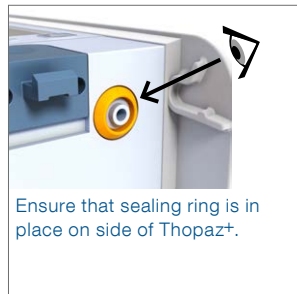
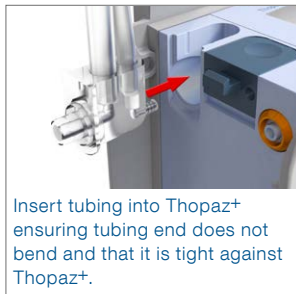
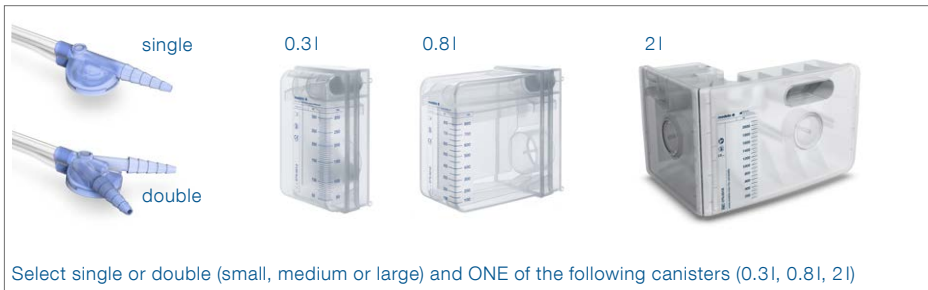


# Thopaz<sup>+</sup>™ Quick Reference Guide



## How to prepare Thopaz+ for use



Canister/  
Tubing Set Up

Functional  
Test Set Up

Change  
Pressure

Access  
Catheter Check

Silence  
Alarm

Filter  
Clogged

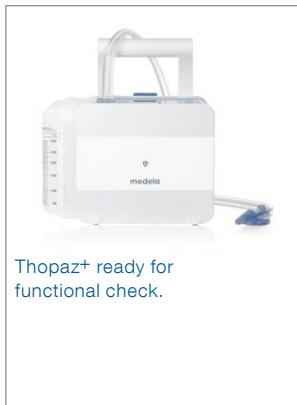
Leak  
in System

Tubing  
clogged

Standby  
Alarm

Battery  
Low

Internal  
Error



## Canister/ Tubing Set Up

Functional  
Test Set Up

Change  
Pressure

Access  
Catheter Check

Silence  
Alarm

Filter  
Clogged

Leak  
in System

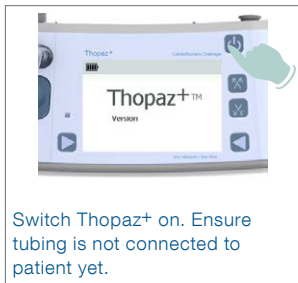
Tubing  
clogged

Standby  
Alarm

Battery  
Low

Internal  
Error

## How to perform functional check



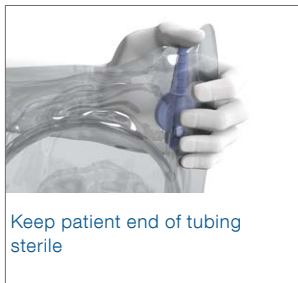
Switch Thopaz+ on. Ensure tubing is not connected to patient yet.



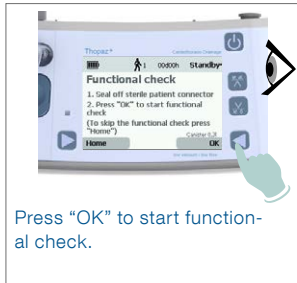
Choose if the treatment is for a new patient.



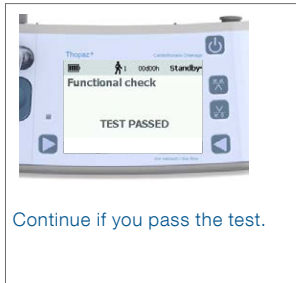
Check detected canister size (wrong detection: Dispose canister)



Keep patient end of tubing sterile



Press "OK" to start functional check.



Continue if you pass the test.

Canister/  
Tubing Set Up

Functional  
Test Set Up

Change  
Pressure

Access  
Catheter Check

Silence  
Alarm

Filter  
Clogged

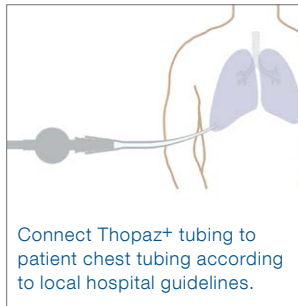
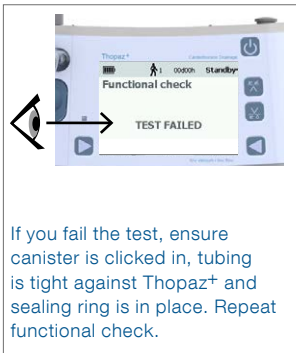
Leak  
in System

Tubing  
clogged

Standby  
Alarm

Battery  
Low

Internal  
Error

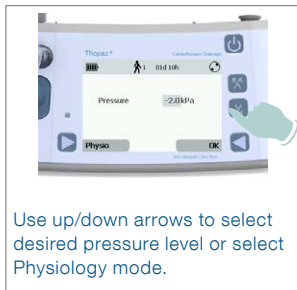


Canister/ Tubing Set Up
<b>Functional Test Set Up</b>
Change Pressure
Access Catheter Check
Silence Alarm
Filter Clogged
Leak in System
Tubing clogged
Standby Alarm
Battery Low
Internal Error

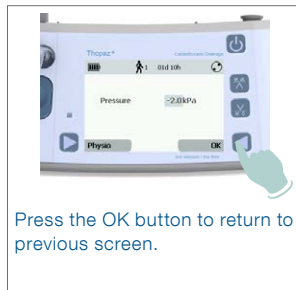
## How to change pressure (when Thopaz+ is running)



Press both buttons simultaneously to highlight pressure.



Use up/down arrows to select desired pressure level or select Physiology mode.



Press the OK button to return to previous screen.

Canister/  
Tubing Set Up

Functional  
Test Set Up

**Change  
Pressure**

Access  
Catheter Check

Silence  
Alarm

Filter  
Clogged

Leak  
in System

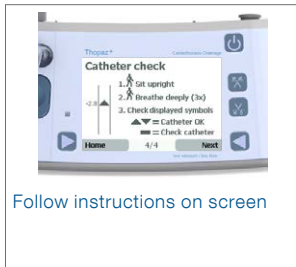
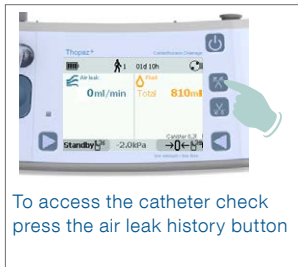
Tubing  
clogged

Standby  
Alarm

Battery  
Low

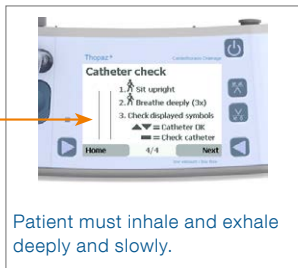
Internal  
Error

## How to access Catheter check



catheter open

check catheter



Notice: The catheter check is only active if the airleak is 0ml/min

Only use the catheter check when patient catheter is in the interpleural space

Canister/  
Tubing Set Up

Functional  
Test Set Up

Change  
Pressure

Access  
Catheter Check

Silence  
Alarm

Filter  
Clogged

Leak  
in System

Tubing  
clogged

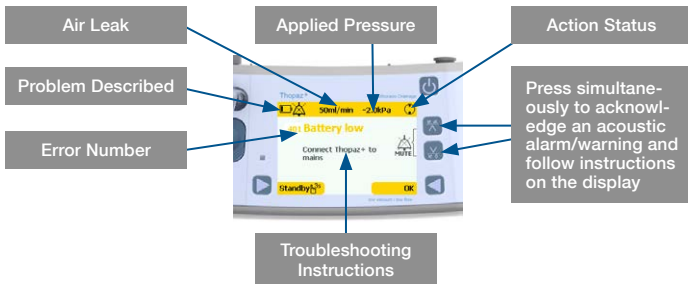
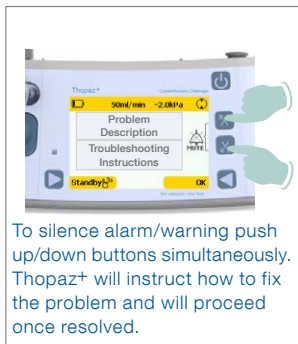
Standby  
Alarm

Battery  
Low

Internal  
Error

## How to silence alarms

Thopaz+ distinguishes between warnings (yellow), alarms (red) and internal errors (red)



Canister/  
Tubing Set Up

Functional  
Test Set Up

Change  
Pressure

Access  
Catheter Check

**Silence  
Alarm**

Filter  
Clogged

Leak  
in System

Tubing  
clogged

Standby  
Alarm

Battery  
Low

Internal  
Error




## Problem: Filter in canister is clogged



The alarm will beep and a description will appear on screen. Thopaz+ will automatically go into standby mode.



To silence alarm press both up/down arrows simultaneously and follow on screen instructions.



Clamp tubing as close to Thopaz+ as possible to prevent fluid leakage or follow prevailing hospital protocol if different than recommended here.



Press blue button to release canister.



Ensure the sealing ring is still in place.



Attach new canister, release clamp and continue treatment by pressing the on button

Canister/  
Tubing Set Up

Functional  
Test Set Up

Change  
Pressure

Access  
Catheter Check

Silence  
Alarm

**Filter  
Clogged**

Leak  
in System

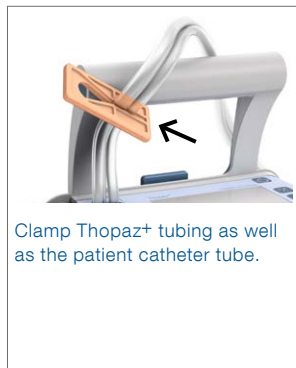
Tubing  
clogged

Standby  
Alarm

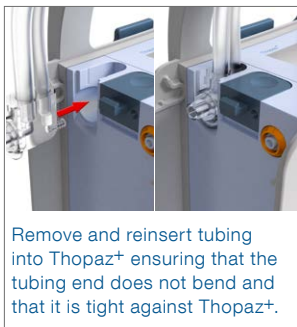
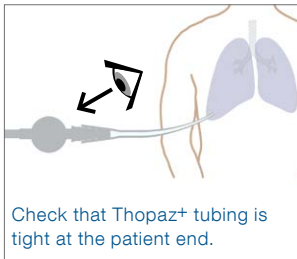
Battery  
Low

Internal  
Error

**Problem:** There is a disconnection of the tubing, the canister may not be clicked in properly, the sealing ring is missing between Thopaz+ and canister or patient is experiencing unusually large airleak



Canister/ Tubing Set Up
Functional Test Set Up
Change Pressure
Access Catheter Check
Silence Alarm
Filter Clogged
<b>Leak in System</b>
Tubing clogged
Standby Alarm
Battery Low
Internal Error



**If problem persists replace tubing and canister.**

Canister/  
Tubing Set Up

Functional  
Test Set Up

Change  
Pressure

Access  
Catheter Check

Silence  
Alarm

Filter  
Clogged

**Leak  
in System**

Tubing  
clogged

Standby  
Alarm

Battery  
Low

Internal  
Error

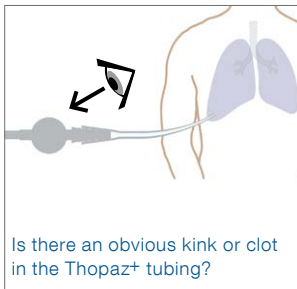
## Problem: Tubing is kinked or clogged



The alarm will beep and a description will appear on screen.



To silence alarm press both up/down arrows simultaneously.



Is there an obvious kink or clot in the Thopaz+ tubing?

- YES – Remove kink, and follow on screen instructions
- NO – Clamp tubing next to canister and clamp patient catheter tube
  - Hold down standby for 3 seconds
  - Remove tubing and dispose
  - Insert new tubing
  - Check for sealing ring
  - Reconnect canister
  - Unclamp patient catheter tube

Canister/  
Tubing Set Up

Functional  
Test Set Up

Change  
Pressure

Access  
Catheter Check

Silence  
Alarm

Filter  
Clogged

Leak  
in System

**Tubing  
clogged**

Standby  
Alarm

Battery  
Low

Internal  
Error

## Problem: Thopaz+ left in standby for 5 minutes



The alarm will beep and a description will appear on screen.



To silence warning press both up/down arrows simultaneously and follow on screen instructions.

**Thopaz+ will ask you if you want to turn the power off or resume treatment. Select "on" or power off.**

Canister/  
Tubing Set Up

Functional  
Test Set Up

Change  
Pressure

Access  
Catheter Check

Silence  
Alarm

Filter  
Clogged

Leak  
in System

Tubing  
clogged

Standby  
Alarm

Battery  
Low

Internal  
Error

## Problem: Thopaz+ has approximately 30 minutes of battery remaining



The alarm will beep and a description will appear on screen.



To silence warning press both up/down arrows simultaneously and follow on screen instructions.



Place Thopaz+ onto docking station or plug power cord directly into Thopaz+ to maintain charge.

### Tip



Ensure docking station is connected to the charger and is plugged into the mains.



Thopaz+ battery meter graphic will show charge is being applied by displaying moving bars

Canister/  
Tubing Set Up

Functional  
Test Set Up

Change  
Pressure

Access  
Patency Check

Silence  
Alarm

Filter  
Clogged

Leak  
in System

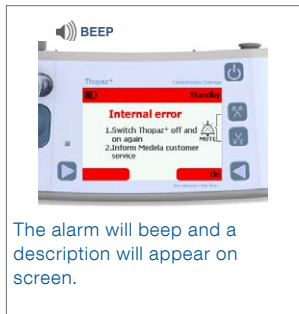
System  
Clogged

Standby  
Alarm

**Battery  
Low**

Internal  
Error

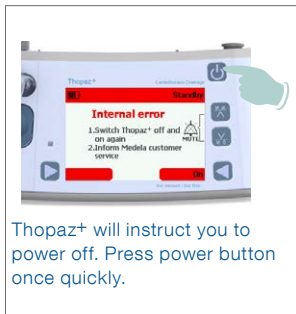
## Problem: Internal error



The alarm will beep and a description will appear on screen.



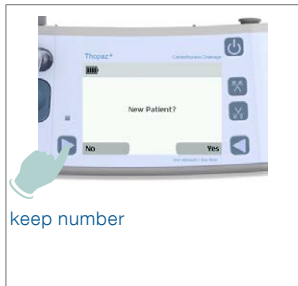
To silence alarm press both up/down arrows simultaneously and follow on screen instructions.



Thopaz+ will instruct you to power off. Press power button once quickly.



Switch Thopaz+ on. Ensure tubing is not connected to patient yet.



keep number

- Keep patient therapy number by selecting "No" when Thopaz+ asks "new patient?"
- Continue treatment with on button.

**If internal error alarm sounds again, turn off Thopaz+ and use replacement Thopaz+. Label Thopaz+ faulty and report incident to Medela Account Manager.**

Canister/  
Tubing Set Up

Functional  
Test Set Up

Change  
Pressure

Access  
Catheter Check

Silence  
Alarm

Filter  
Clogged

Leak  
in System

Tubing  
clogged

Standby  
Alarm

Battery  
Low

**Internal  
Error**

For set up videos and much more visit **Thopaz+ University**  
at [www.medela.com](http://www.medela.com)

or refer to the instructions for use for comprehensive user information.



This Quick Reference Guide does not replace the instructions for use ref 200.6841 and refers to firmware 1.01.

CAUTION: Federal US law restricts this device to sale by or on the order of a physician.



Medela AG  
Lättichstrasse 4b  
6341 Baar, Switzerland  
[www.medela.com](http://www.medela.com)

#### **USA**

Medela Inc.  
1101 Corporate Drive  
McHenry, IL 60050  
USA  
Phone +1 877 735 1626  
Fax +1 815 307 8942  
[info-healthcare@medela.com](mailto:info-healthcare@medela.com)  
[www.medela-healthcare.us](http://www.medela-healthcare.us)

#### **CANADA**

Medela Canada Inc.  
4160 Sladeview Crescent Unit # 8  
Mississauga, Ontario, L5L 0A1  
Canada  
Toll Free 800 435 8316  
Toll Free Fax 800 995 7867  
[info@medela.ca](mailto:info@medela.ca)  
[www.medela.ca](http://www.medela.ca)